



EPT20-20RA(S)

EPT20-RASH

EPT25-RAS

EPT30-RAS

Electric Pallet Truck 2.0/2.5/3.0t

Ideal Option for Heavy Duty Long Distance Material Handling Tasks:
Driving Wheel Pressure Auto-compensation Patent Design Makes Operation Comfortable & Smooth;
Dual-Monitoring Electric Steering Offers Safer and Simpler Operations;
Driving Speed up to 12KM/H Greatly Improves the Efficiency of Long-distance Job.

EP EQUIPMENT CO.,LTD
www.ep-ep.com



FEATURE

Performance

- The innovative AC system offers strong power, accurate control and excellent performance.
- High strength vertical gearbox provides reliable uptime.
- Low-noise and durable hydraulic unit, high quality cylinder as well as hose ensure the high reliability of hydraulic system.
- AMP connector and durable electric wires greatly reduce malfunctions of components.
- One-time formed fork, box type frame and adjustable linkage extends the life of undercarriage.
- Innovative Drive floating operation system(DFA) ensures the stability of the truck when steering at high speed.



Safety

- Two travel speed improves operator safety, with half speed when protection arm off and full speed when protection arm on.
- Emergency reverse belly button protects the operator from getting hurt.
- Emergency disconnecter will cut off power source to avoid accident when truck goes out of control.
- Anti-rolling back brake keeps the truck from skidding down when truck is out of control or travelling on ramp.
- Dual-monitoring power steering, the top safety design (electric steering).

Operation

- With the new design of ergonomical tiller head, all buttons can be reached conveniently & comfortably.
- Foldable platform reduces vibration which make operator comfortable when driving.
- Unique suspension driving floating system(DFA) design, make the operation easy and comfortable.
- When platform is folded, truck can work at low speed in smaller space.
- Ergonomical armrest guarantees easy operation & good resistance.
- Electric power steering, smooth & comfortable (EPS).

Maintenance

- AC traction motor, maintenance free.
- Hour meter and battery indicator remind the operator of battery charging.
- Easily remove the back cover by only losing four bolts; Access to all key components for inspection, maintenance and replacement.
- Easy access for battery maintenance.
- Vertical motor makes the inspection & service much more convenient.
- Control system allows easy trouble-shooting.
- Low voltage lift cut off design protects batteries.



Electric Pallet Truck 2.0t

EPT20-20RA(S)/EPT20-RASH

Distinguishing mark							
1.1	Manufacturer			EP		EP	
1.2	Model designation			EPT20-20RA (S)		EPT20-RASH	
1.3	Drive unit			Electrics		Electrics	
1.4	Operator type			standing		standing	
1.5	rated capacity	Q	kg	2000		2000	
1.6	Load center distance	c	mm	600		600	
1.8	Load distance	x	mm	916 / 982	937 / 1003	916 / 982	937 / 1003
1.9	Wheelbase	y	mm	1418	1438	1418	1438
Weight							
2.1	Service weight (include battery)		kg	670		690	
2.2	Axle loading, laden driving side/loading side		kg	1066 / 1604		1076 / 1614	
2.3	Axle loading, unladen driving side/loading side		kg	546 / 124		556 / 134	
Types,Chassis							
3.1	Tyre type driving wheels/loading wheels			Polyurethane / Polyurethane		Polyurethane / Polyurethane	
3.2	Tyre size, driving wheels (diameter×width)		mm	Φ230x75		Φ230x75	
3.3	Tyre size, loading wheels (diameter×width)		mm	Φ85x70 / Φ83x115		Φ85x70 / Φ83x115	
3.4	Tyre size, caster wheels (diameter×width)		mm	Φ130x60		Φ130x60	
3.5	Wheels, number driving, caster/loading (x=drive wheels)		mm	1 x +2 / 4 / 1 x + 2 / 2		1 x +2 / 4 / 1 x + 2 / 2	
3.6	Track width, front,driving side	b ₁₀	mm	510		510	
3.7	Track width,rear,loading side	b ₁₁	mm	370 / 430 / 515		370 / 430 / 515	
Dimensions							
4.4	Lift height	h ₃	mm	125		125	
4.9	Height drawbar in driving position min./max.	h ₁₄	mm	1150 / 1470		1150 / 1470	
4.15	Lowered height	h ₁₃	mm	85		85	
4.19	Overall length	l ₁	mm	1860	1930	1860	1930
4.20	Length to face of forks	l ₂	mm	710		710	
4.21	Overall width	b ₁ / b ₂	mm	730		730	
4.22	Fork dimensions	s/ e/ l	mm	55 x 170 x 1150	55 x 170 x 1220	55 x 170 x 1150	55 x 170 x 1220
4.25	Outside width of the forks	b ₅	mm	540 / 600 / 685		540 / 600 / 685	
4.32	Ground clearance, center of wheelbase	m ₂	mm	30		30	
4.34.1	Aisle width for pallets 1000 × 1200 crossways	Ast	mm	1984		1984	
4.34.2	Aisle width for pallets 800 × 1200 lengthways	Ast	mm	2184		2184	
4.35	Turning radius	Wa	mm	1700		1700	
Performance data							
5.1	Travel speed, laden/ unladen	km/ h	km/h	5.5 / 6		9.0 / 12.0	
5.2	Lifting speed, laden/ unladen		m/ s	0.023 / 0.031		0.023 / 0.031	
5.3	Lowering speed, laden/ unladen		m/ s	0.043 / 0.032		0.043 / 0.032	
5.8	Max. gradeability, laden/unladen		%	8 / 16		8 / 16	
5.10	Service brake type			Electromagnetic		Electromagnetic	
Electric-engine							
6.1	Drive motor rating S2 60 min		kW	1.5		2.5	
6.2	Lift motor rating at S3 15%		kW	2.2		2.2	
6.3	The maximum allowed size battery		mm	660 x 205 x 660		660 x 205 x 660	
6.4	Battery voltage/nominal capacity K5		V/ Ah	24 / 210		24 / 210	
6.5	Battery weight		kg	190		190	
Addition data							
8.1	Type of drive control			AC		AC	
10.5	Steering type			Mechanical/Electronic		Electronic	
10.7	Sound pressure level at the driver's ear		dB (A)	74		74	

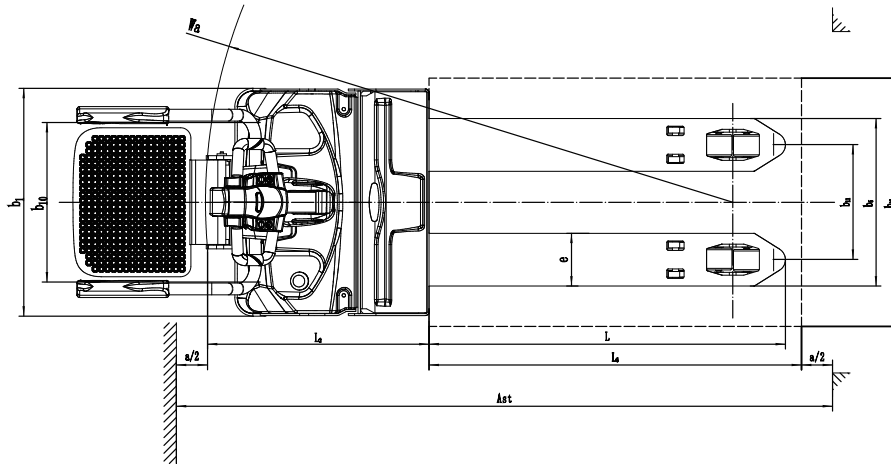
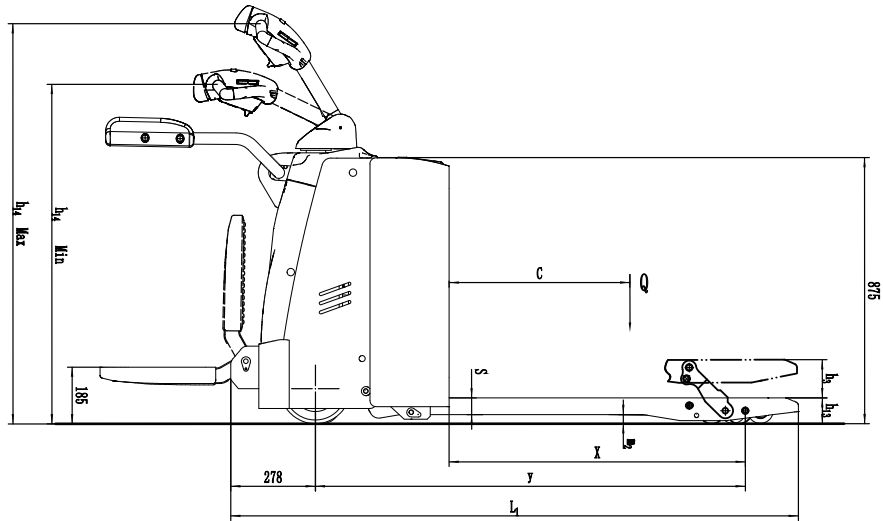
- 1.The parameters in the table are of the standard model. For more information, please contact us.
- 2.The parameters are subject to change without notice.

Electric Pallet Truck 2.5t/3.0t

EPT25-RAS/EPT30-RAS

Distinguishing mark						
1.1	Manufacturer			EP		EP
1.2	Model designation			EPT25-RAS		EPT30-RAS
1.3	Drive unit			Electrics		Electrics
1.4	Operator type			standing		standing
1.5	rated capacity	Q	kg	2500		3000
1.6	Load center distance	c	mm	600		600
1.8	Load distance	x	mm	916 / 982	937 / 1003	916 / 982 937 / 1003
1.9	Wheelbase	y	mm	1418	1438	1418 1438
Weight						
2.1	Service weight (include battery)		kg	690		690
2.2	Axle loading, laden driving side/loading side		kg	1176 / 2014		1356 / 2334
2.3	Axle loading, unladen driving side/loading side		kg	556 / 134		556 / 134
Types, Chassis						
3.1	Tyre type driving wheels/loading wheels			Polyurethane / Polyurethane		Polyurethane / Polyurethane
3.2	Tyre size, driving wheels (diameter×width)		mm	Φ230x75		Φ230x75
3.3	Tyre size, loading wheels (diameter×width)		mm	Φ85x70 / Φ83x115		Φ85x70 / Φ83x115
3.4	Tyre size, caster wheels (diameter×width)		mm	Φ130x60		Φ130x60
3.5	Wheels, number driving, caster/loading (x=drive wheels)		mm	1 x +2 / 4 / 1 x + 2 / 2		1 x +2 / 4 / 1 x + 2 / 2
3.6	Track width, front, driving side	b ₁₀	mm	510		510
3.7	Track width, rear, loading side	b ₁₁	mm	370 / 430 / 515		370 / 430 / 515
Dimensions						
4.4	Lift height	h ₃	mm	125		125
4.9	Height drawbar in driving position min./max.	h ₁₄	mm	1150 / 1470		1150 / 1470
4.15	Lowered height	h ₁₃	mm	85		85
4.19	Overall length	l ₁	mm	1860	1930	1860 1930
4.20	Length to face of forks	l ₂	mm	710		710
4.21	Overall width	b ₁ / b ₂	mm	730		730
4.22	Fork dimensions	s/ e/ l	mm	55 x 170 x 1150	55 x 170 x 1220	55 x 170 x 1150 55 x 170 x 1220
4.25	Outside width of the forks	b ₅	mm	540 / 600 / 685		540 / 600 / 685
4.32	Ground clearance, center of wheelbase	m ₂	mm	30		30
4.34.1	Aisle width for pallets 1000 × 1200 crossways	Ast	mm	1984		1984
4.34.2	Aisle width for pallets 800 × 1200 lengthways	Ast	mm	2184		2184
4.35	Turning radius	Wa	mm	1700		1700
Performance data						
5.1	Travel speed, laden/ unladen	km/ h	km/h	5.5 / 6		5.5 / 6
5.2	Lifting speed, laden/ unladen		m/ s	0.023 / 0.031		0.021 / 0.031
5.3	Lowering speed, laden/ unladen		m/ s	0.043 / 0.032		0.048 / 0.032
5.8	Max. gradeability, laden/unladen		%	6 / 16		5 / 16
5.10	Service brake type			Electromagnetic		Electromagnetic
Electric engine						
6.1	Drive motor rating S2 60 min		kW	1.5		2.5
6.2	Lift motor rating at S3 15%		kW	2.2		2.2
6.3	The maximum allowed size battery		mm	660 x 205 x 660		660 x 205 x 660
6.4	Battery voltage/nominal capacity K5		V/ Ah	24 / 210		24 / 210
6.5	Battery weight		kg	190		190
Addition data						
8.1	Type of drive control			AC		AC
10.5	Steering type			Mechanical/Electronic		Electronic
10.7	Sound pressure level at the driver's ear		dB (A)	74		74

- 1.The parameters in the table are of the standard model. For more information, please contact us.
- 2.The parameters are subject to change without notice.



Option

Options	EPT20-20RA/20RAS	EPT20-RASH	EPT25-RAS	EPT30-RAS
Fork length	○ 1150/1220mm	○ 1150/1220mm	○ 1150/1220mm	○ 1150/1220
Fork width	○ 685/600/540mm	○ 685/600/540mm	○ 685/600/540mm	○ 685/600/540mm
Double load wheel	●	●	●	●
Single load wheel	●	●	●	●
Fork lowered height	—	—	—	—
Driving wheel	● PU ○ Rubber	● PU —	● PU ○ Rubber	● PU ○ Rubber
Balance wheel	●	●	●	●
Battery capacity	○ 210AH/240AH/270AH/360AH	○ 210AH/240AH/270AH/360AH	○ 210AH/240AH/270AH/360AH	○ 240AH/270AH/360AH
Lateral change battery	○ 165/210AH/240AH	○ 165/210AH	○ 165/210AH/240AH	○ 210AH/240AH
Cold storage	○	○	○	○
Battery indicator without hour meter	○	○	○	○
Battery indicator with hour meter	●	●	●	●
Water auto-filling system	○	○	○	○
Vertical handler working	○	○	○	—
Half speed function in turning	—	●	—	●
Guard arm	●	●	●	●
Special backrest	○ 1220mm (48in)/1520mm (60in)	○ 1220mm (48in)/1520mm (60in)	○ 1220mm (48in)/1520mm (60in)	○ 1220mm (48in)/1520mm (60in)

Note: ● standard ○ option — NA